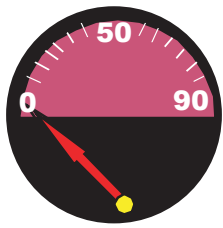
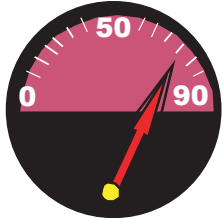


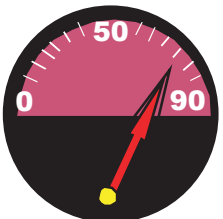
KINECHEK - HYDRAULIC SPEED REGULATOR



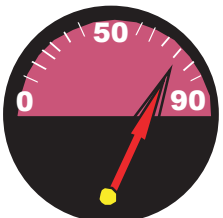
Start of first stroke, rod fully extended just prior to application of thrust. Kinecheks operate in the compression portion of the stroke only.



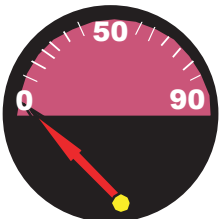
Force applied, rod in compression stroke, constant feedspeed controlled by adjustable Kinecek. Feed rate will remain constant through out the entire stroke of the Kinecek until the load is released and the rod extends.



Full stroke time for a Standard 2" Stroke Kinecek is variable from 0 sec. to 10 minutes dependent upon load and the adjustment setting of the Kinecek.



Return stroke after load is released is aprox. .106 sec



End of compression stroke, load is removed and the rod returns to its starting position, fully extended. Compression stroke is slow and steady. Return stroke is very quick.