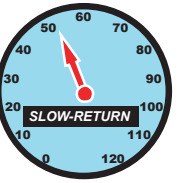
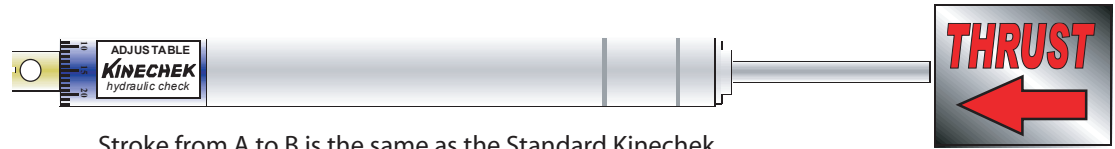


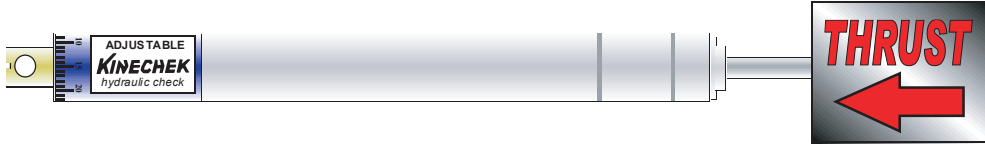
SLOW-RETURN - HYDRAULIC SPEED REGULATOR



A



Stroke from A to B is the same as the Standard Kinecek.

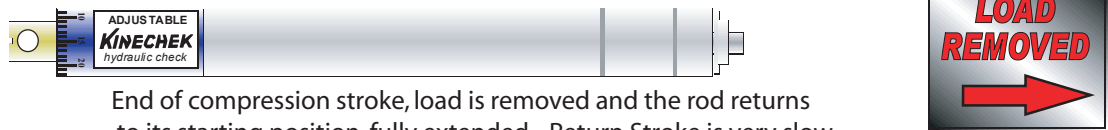


B



Stroke from C to D is as explained below.

C



End of compression stroke, load is removed and the rod returns to its starting position, fully extended. Return Stroke is very slow.



Unlike the Standard Kinecek, the return stroke after load is released is slow and customizable from 6 to 22 sec.



The rod returns at a smooth and constant rate throughout the return stroke.



D

